











# Black Watch Premier Programming: Girls U9 - U18

## What is Team Account?

Team Account covers expenses such as league and referee fees, tournament applications and coaches reimbursements for travel. These expenses are not part of your Black Watch Premier tuition.

Because each teams commitments vary based upon age, acceptance and choice of tournament levels to attend, number of players, etc., each team has their own individual travel account and budget.

We have provided you with an estimated team account by age based upon a roster of 15 players. Please note that this is only an estimate and can vary + or - based on the factors outlined above.

## ESTIMATED

RISING U9-U10: \$150-\$200 per season  
(\$500-\$600 combined for all 3 seasons)

RISING U11-U12: \$500 - \$600

RISING U13-U14: \$800 - \$1000

RISING U15-U16: \$500 - \$600

RISING U17-U18: \$500 - \$600

## Sample Schedule\*

SEPTEMBER -OCTOBER

- Training (\*limited training due to scholastic involvement)
- Registration Picnic

NOVEMBER- DECEMBER:

- Training (2-3 times per week)
- Holiday Tournament (U9-U12)
- Fustal Training (U13-U18)
- Bethesda Tournament (U13-U18)
- Massapequa Tournament( U13-U18)

JANUARY-FEBRUARY:

- Training (2-3 times per week)
- League Play at Local Facility

MARCH- APRIL:

- MPS Tournament ( U13-U18)
- NEFC Preseason Tournament ( U13-U18)

MAY- JUNE:

- Training (2-3 times per week)
- Guilderland Memorial Day Tournament ( U9-U18)
- ED Spring Cup ( U13-U18)
- MAPS Cup ( U13-U18)

JULY :

- Training (2-3 times per week)
- Super Y

\* schedule subject to change

## Tournaments\*

- Afrims Holiday Tournament (U9-U12)
- Guilderland Memorial Tournament (U9-U18)
- Saratoga May Day Tournament (U9-U12)
- Empire Cup (U9-U12)
- Bethesda Tournament (Bethesda, MD) (U13-U18)
- Massapequa Tournament (U13-U18)
- Manhattan Tournament (U13-U18)
- MPS Tournament (U13-U18)
- NEFC Preseason Tournament (MA) (U13-U18)

- EDP Spring Cup (NJ) (U13-U18)
- MAPS Cup (U13-U18)
- State Cup (U9-U12)

## Leagues

- CDYSL (U9-12, U1-U18)
- EDP League (U13, U15-U18)
- Presidents League (U16)

\*Additional tournaments may be added.

# Welcome to Black Watch Premier Soccer

## BLACK WATCH PREMIER FACILITIES

### BWP Training & Match Facilities

Black Watch Premier is proud to partner with local schools and organizations to host training sessions, practices and games.

Our facilities are conveniently located and give the Club flexibility with scheduling. Our goal is to ensure we have access to the best facilities and field conditions possible for our players.

Facilities include:

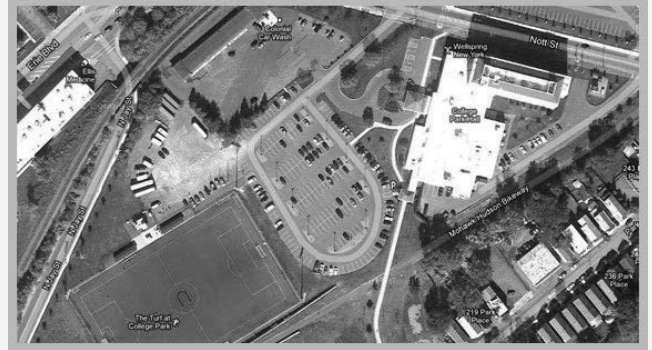
Union College (Outdoor Training / Matches)  
450 Nott Street Schenectady, NY  
Type: Turf Field | Restroom: Porta-poddy only)

Front Street (Indoor Training Facility)  
17 Mohawk Avenue, Schenectady, NY  
Type: Turf Field | Restroom: Yes

Frank Bailey Field (Outdoor Training / Matches)  
807 Union Street, Schenectady, NY  
Type: Turf Field | Restroom: Yes

Garis Field (Outdoor Training / Matches)  
807 Union Street, Schenectady, NY  
Type: Grass Field | Restroom: No

Brown School - Futsal Training



# Welcome to Black Watch Premier Soccer

## Staff & Coaches

At BWP, our Technical Staff and Club Personnel collectively work together to provide a better overall experience and delivery of our services for all our members, the players and the families.

## Staff Coaches

U13: Technical Staff Coach: Lauren Toutellott

U14: Technical Staff Coach: Emmie Doin

U15/U16: Technical Staff Coach: Steve Freeman  
Associate Staff Coaches: Lauren Tourtellott and Emma Pedrin

U17/18: Technical Staff Coach: Steve Freeman  
Associate Staff Coaches: Lauren Tourtellott and Emma Pedrin

Associate Staff Coaches Chuck Assini, Mike Boland, Andrew Hart, Joe Sorriento and Ryan Stevens

**Goalkeeper Coach (All Groups):** Bubby Leasure  
.....

## Administrative Staff

The BWP Administrative Team main objectives are to support the BWP Technical Staff, the implementation of our programming and the needs of our Club membership. BWP executes the day-to-day operations of the Club's business.

Currently, the BWP Administrative Team consists of:

- Larry Jasenski, Chief Financial Officer, 14 years with BWP
- Steve Freeman, Director of Programming, 19 years with BWP
- Shanice Fingar, Director of Operations, 8 years with BWP
- Frank Romeo, Creative Director, 8 years with BWP
- Phil Sidoti, Marketing Director, 1 year with BWP

## Board of Trustees

Black Watch Premier (BWP) is a 501c3 not-for-profit organization recognized in New York State. The BWP Board of Trustees meets regularly to give guidance, create policy and give general oversight to the programming of the Club's business.

The BWP Board of Trustees consists of:

- Dr. Jeffrey Rockmore, BWP President, 8 years with BWP
- Dr. Daniel Esper, 14 years with BWP
- Shaun Mahoney, 5 years with BWP
- Christopher Rosetti, 3 years with BWP
- Michael Whalen, 3 years with BWP



**Please register at:**  
[www.blackwatchpremier.com](http://www.blackwatchpremier.com)